



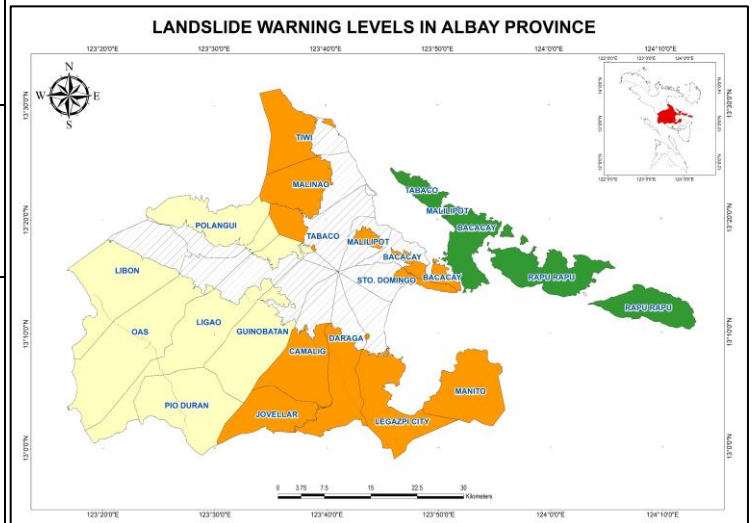
Republic of the Philippines
 Department of Environment and Natural Resources
MINES AND GEOSCIENCES BUREAU
 Regional Office No. V
 DENR Annex Bldg., Regional Center, Rawis, Legazpi City
 E-mail Address: region5@mgb.gov.ph
 Website: region5.mgb.gov.ph
 Telefax No. (052) 482-1056 Tel No. (052) 482-1156



LANDSLIDE WARNING BULLETIN NO. 4
FOR SHEAR LINE AND LOW-PRESSURE AREA (LPA)

Issued on December 21, 2022, at 6:00 a.m.
 Next bulletin: December 21, 2022, at 6:00 p.m.

LANDSCAPE UNITS	AREAS COVERED	CUMULATIVE & FORECAST RAIN (mm)	WARNING LEVEL	WARNING LEVEL	POSSIBLE SCENARIO	RECOMMENDED ACTIONS	
1. Albay West Coast	Southwest Libon	135.2	0	0	<ul style="list-style-type: none"> Landslide probability is $\leq 10\%$ Landslide occurrence is very unlikely 	<ul style="list-style-type: none"> Monitor PAGASA's weather outlook on TV, radio, and print media 	
	West Oas						
	West Ligao						
	West Pio Duran						
2. Albay Syncline	Libon	135.2	0	1	<ul style="list-style-type: none"> Landslide probability is $> 10\%$ to 50% Landslides may occur, especially if high rainfall intensity continues Few localized shallow landslides 	<ul style="list-style-type: none"> Convene the LDRRMC to prepare for landslide preparedness activities Identify residents at risk based on the MGB-V 1:10,000 scale landslide susceptibility map Advise residents dwelling in landslide-prone areas to prepare for possible evacuation Monitor real-time rainfall and PAGASA rainfall forecasts 	
	Central Oas						
	Central Ligao	150.8	0	1	<ul style="list-style-type: none"> Landslide probability is $> 50\%$ to 90% Landslide occurrence is possible in the next 24 hours Landslides are likely to occur in areas with modified slopes (e.g., road cuts) and high to very high landslide susceptibilities 	<ul style="list-style-type: none"> Convene the LDRRMC for immediate preparedness activities and execution of landslide evacuation protocols Keep close watch of areas with high and very high landslide susceptibilities Prepare for and/or execute landslide evacuation protocols for identified residents at risk 	
	South Guinobatan						
	Pio Duran						
	3. Eroded Volcanic Landscapes	South Camalig	306.9	2	2	<ul style="list-style-type: none"> Landslide probability is $> 90\%$ Landslides are probably occurring or are very likely to occur Multiple and widespread landslide occurrence 	<ul style="list-style-type: none"> Execute emergency response plans Advise residents to stay in designated evacuation centers until decampment orders are issued Report the location, date, and time of landslide occurrence to APSEMO or MGB-V
		Jovellar					
		South Daraga	153.3	0	3	<ul style="list-style-type: none"> Landslide probability is $> 90\%$ Landslides are probably occurring or are very likely to occur Multiple and widespread landslide occurrence 	<ul style="list-style-type: none"> Execute emergency response plans Advise residents to stay in designated evacuation centers until decampment orders are issued Report the location, date, and time of landslide occurrence to APSEMO or MGB-V
West Tiwi							
West Malinao							
Northwest Tabaco							
Polangui							
North Oas							
North Ligao							
Malilipot							
Sto. Domingo							
4. Ophiolitic Belt	South Bacacay	306.9	2	2	<ul style="list-style-type: none"> Landslide probability is $> 90\%$ Landslides are probably occurring or are very likely to occur Multiple and widespread landslide occurrence 	<ul style="list-style-type: none"> Execute emergency response plans Advise residents to stay in designated evacuation centers until decampment orders are issued Report the location, date, and time of landslide occurrence to APSEMO or MGB-V 	
	Manito						
	South Legazpi						
	Daraga						
	Camalig						
	Rapu-Rapu						323.0
Bacacay (Cagraray)							
Malilipot (Cagraray)							
Tabaco (San Miguel)							



Prepared by:

The Capstone Project Team/
 MGB-V Geohazards Operation Center

Reviewed by:

Arlene E. Dayao
 Chief Geologist

Approved by:

Guillermo A. Molina, Jr. IV
 Regional Director