



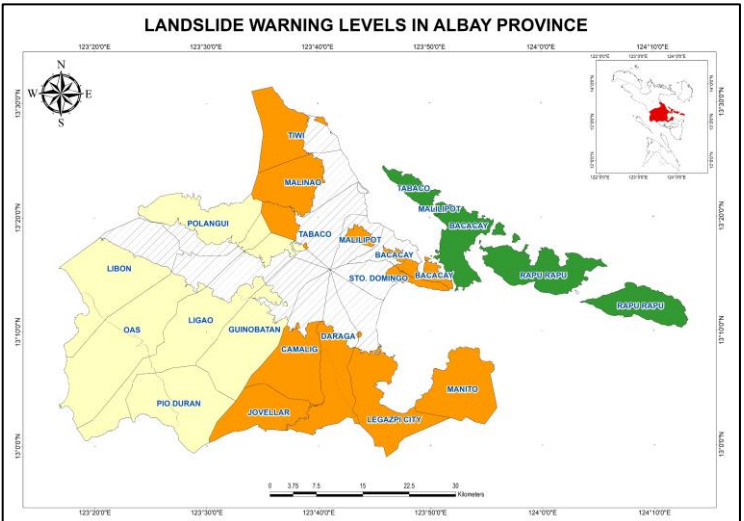
Republic of the Philippines  
 Department of Environment and Natural Resources  
**MINES AND GEOSCIENCES BUREAU**  
 Regional Office No. V  
 DENR Annex Bldg., Regional Center, Rawis, Legazpi City  
 E-mail Address: region5@mgb.gov.ph  
 Website: region5.mgb.gov.ph  
 Telefax No. (052) 482-1056 Tel No. (052) 482-1156



**LANDSLIDE WARNING BULLETIN NO. 3**  
**FOR SHEAR LINE AND TROUGH OF LOW-PRESSURE AREA (LPA)**

Issued on December 20, 2022, at 6:00 p.m.  
 Next bulletin: December 21, 2022, at 6:00 a.m.

LANDSCAPE UNITS	AREAS COVERED	CUMULATIVE & FORECAST RAIN (mm)	WARNING LEVEL	WARNING LEVEL	POSSIBLE SCENARIO	RECOMMENDED ACTIONS
1. Albay West Coast	Southwest Libon	124.8	0	0	<ul style="list-style-type: none"> <li>Landslide probability is <math>\leq 10\%</math></li> <li>Landslide occurrence is very unlikely</li> </ul>	<ul style="list-style-type: none"> <li>Monitor PAGASA's weather outlook on TV, radio, and print media</li> </ul>
	West Oas					
	West Ligao					
	West Pio Duran					
2. Albay Syncline	Libon	124.8	0	1	<ul style="list-style-type: none"> <li>Landslide probability is <math>&gt; 10\%</math> to <math>50\%</math></li> <li>Landslides may occur, especially if high rainfall intensity continues</li> <li>Few localized shallow landslides</li> </ul>	<ul style="list-style-type: none"> <li>Convene the LDRRMC to prepare for landslide preparedness activities</li> <li>Identify residents at risk based on the MGB-V 1:10,000 scale landslide susceptibility map</li> <li>Advise residents dwelling in landslide-prone areas to prepare for possible evacuation</li> <li>Monitor real-time rainfall and PAGASA rainfall forecasts</li> </ul>
	Central Oas					
	Central Ligao	132.0	0	1	<ul style="list-style-type: none"> <li>Landslide probability is <math>&gt; 50\%</math> to <math>90\%</math></li> <li>Landslide occurrence is possible in the next 24 hours</li> <li>Landslides are likely to occur in areas with modified slopes (e.g., road cuts) and high to very high landslide susceptibilities</li> </ul>	<ul style="list-style-type: none"> <li>Convene the LDRRMC for immediate preparedness activities and execution of landslide evacuation protocols</li> <li>Keep close watch of areas with high and very high landslide susceptibilities</li> <li>Prepare for and/or execute landslide evacuation protocols for identified residents at risk</li> </ul>
	South Guinobatan					
	Pio Duran	294.8	2	2	<ul style="list-style-type: none"> <li>Landslide probability is <math>&gt; 90\%</math></li> <li>Landslides are probably occurring or are very likely to occur</li> <li>Multiple and widespread landslide occurrence</li> </ul>	<ul style="list-style-type: none"> <li>Execute emergency response plans</li> <li>Advise residents to stay in designated evacuation centers until decampment orders are issued</li> <li>Report the location, date, and time of landslide occurrence to APSEMO or MGB-V</li> </ul>
	South Camalig					
	Jovellar					
	South Daraga					
3. Eroded Volcanic Landscapes	West Tiwi	299.7	2	2	<ul style="list-style-type: none"> <li>Landslide probability is <math>&gt; 90\%</math></li> <li>Landslides are probably occurring or are very likely to occur</li> <li>Multiple and widespread landslide occurrence</li> </ul>	<ul style="list-style-type: none"> <li>Execute emergency response plans</li> <li>Advise residents to stay in designated evacuation centers until decampment orders are issued</li> <li>Report the location, date, and time of landslide occurrence to APSEMO or MGB-V</li> </ul>
	West Malinao					
	Northwest Tabaco	131.8	0	0	<ul style="list-style-type: none"> <li>Landslide probability is <math>&gt; 90\%</math></li> <li>Landslides are probably occurring or are very likely to occur</li> <li>Multiple and widespread landslide occurrence</li> </ul>	<ul style="list-style-type: none"> <li>Execute emergency response plans</li> <li>Advise residents to stay in designated evacuation centers until decampment orders are issued</li> <li>Report the location, date, and time of landslide occurrence to APSEMO or MGB-V</li> </ul>
	Polangui					
	North Oas	294.3	2	2	<ul style="list-style-type: none"> <li>Landslide probability is <math>&gt; 90\%</math></li> <li>Landslides are probably occurring or are very likely to occur</li> <li>Multiple and widespread landslide occurrence</li> </ul>	<ul style="list-style-type: none"> <li>Execute emergency response plans</li> <li>Advise residents to stay in designated evacuation centers until decampment orders are issued</li> <li>Report the location, date, and time of landslide occurrence to APSEMO or MGB-V</li> </ul>
	North Ligao					
	Malilipot					
	Sto. Domingo					
	South Bacacay	294.3	2	2	<ul style="list-style-type: none"> <li>Landslide probability is <math>&gt; 90\%</math></li> <li>Landslides are probably occurring or are very likely to occur</li> <li>Multiple and widespread landslide occurrence</li> </ul>	<ul style="list-style-type: none"> <li>Execute emergency response plans</li> <li>Advise residents to stay in designated evacuation centers until decampment orders are issued</li> <li>Report the location, date, and time of landslide occurrence to APSEMO or MGB-V</li> </ul>
	Manito					
South Legazpi						
Daraga						
Camalig	301.4	1	1	<ul style="list-style-type: none"> <li>Landslide probability is <math>&gt; 90\%</math></li> <li>Landslides are probably occurring or are very likely to occur</li> <li>Multiple and widespread landslide occurrence</li> </ul>	<ul style="list-style-type: none"> <li>Execute emergency response plans</li> <li>Advise residents to stay in designated evacuation centers until decampment orders are issued</li> <li>Report the location, date, and time of landslide occurrence to APSEMO or MGB-V</li> </ul>	
Rapu-Rapu						
Bacacay (Cagraray)						
Malilipot (Cagraray)						
Tabaco (San Miguel)						



Prepared by:

The Capstone Project Team/  
 MGB-V Geohazards Operation Center

Reviewed by:

Arlene E. Dayao  
 Chief Geologist

Approved by:

Guillermo A. Molina, Jr. IV  
 Regional Director